

**VANTRUE**

# Nexus 5S **N5 S**

USER MANUAL **V1.1**



[vantrue.com](http://vantrue.com)

truly driven.



**VANTRUE**

[www.vantrue.net/contact](http://www.vantrue.net/contact)



**facebook**

[facebook.com/vantrue.live](https://facebook.com/vantrue.live)



**Instagram**

[instagram.com/vantrue\\_official/](https://instagram.com/vantrue_official/)



**LINE**

ID: @860fnbxk

# Contents

<b>1. Quick Start Guide</b>	<b>1</b>
1.1 What's in the Box?	1
1.2 Installation Guide	2
<b>2. Usage Instructions</b>	<b>4</b>
2.1 Camera Overview	4
2.2 Button Instructions	5
2.3 LED Indicator Instructions	7
2.4 Screen Overview	8
2.5 Operation Guide	8
2.6 Menu Introduction	29
<b>3. Specifications &amp; FAQs</b>	<b>36</b>
3.1 Technical Specifications	36
3.2 Usage Notes	38
3.3 FAQs	39
<b>4. Warranty &amp; Support</b>	<b>40</b>

## **Warnings:**

- Please read the user manual carefully before using this dash cam.
- To use this dash cam, please keep it plugged in.
- To ensure the driving safety, please do not configure this dash cam or watch the driving footage when driving.
- This product requires a SD card for operation, please use a functioning SD card.
- Please do not disassemble the dash cam or repair it yourself. If it malfunctions, please contact Vantrue official support.
- Please do not install the dash cam on the position that may obstructs your driving view.
- Keep the product away from high temperature and humid environments.
- To enhance user experience, we will update firmware periodically. Please update the firmware and experience it if needed.
- Please do not install the dash cam directly in front of passengers in case of accidental detachment and potential safety hazards.
- Please note: The VANTRUE APP may not be connected when you are using wireless CarPlay or Android Auto.
- Please use this product within the bounds of the law.

# 1. Quick Start Guide

## 1.1 What's in the box?



**A. Vantrue N5S Dash Cam**



**B. Rear Camera**



**C. GPS Mount**



**D. Car Charger (11.5ft)**



**E. Rear Camera Cable (20ft)**



**F. USB Data Cable (3.3ft, for data transmission only)**



**G. Electrostatic Stickers\*2**



**H. Crowbar**



**I. Dust-free Cloth**



**J. Warning Stickers \*2**



**K. Adhesive Sticker for Rear Camera\*1**



**L. Quick Start Guide**



**M. Cable Clips**



**N. GPS Mount Base\*1**



**O. Adhesive Promoter**

### Optional Accessories (Buy Separately)



**P. Vantrue Hardwire Kit**



**Q. CPL Filter**



**R. Remote Controller**



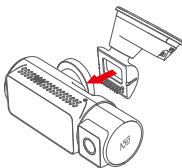
**S. LTE Module**

## 1.2 Installation Guide

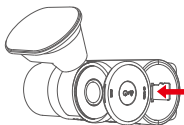
### Note:

- Please clean the installation area for the main unit and rear camera before installing.
- We recommend attaching the electrostatic stickers before installing the dash cam.
- When installing GPS mount, please press the GPS mount firmly against the windshield to remove air bubbles and ensure adhesion.
- After installing the car charger and rear camera, please use the cable clips to organize the cables of car charger and rear camera (refer to installation diagrams ⑤ and ⑥).
- Please format the SD card before first use.

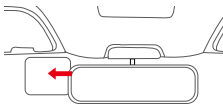
### Installation Diagrams:



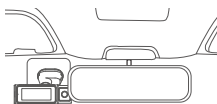
① Assembling the mount



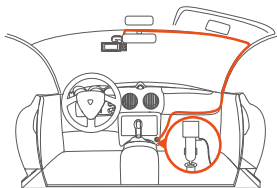
② Inserting the SD card



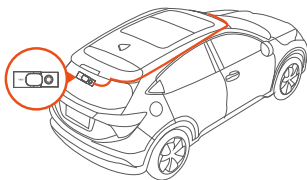
③ Attaching the electrostatic stickers



④ Installing the dash cam



## ⑤ Installing the car charger and wiring



## ⑥ Installing the rear camera and wiring

### **Note:**

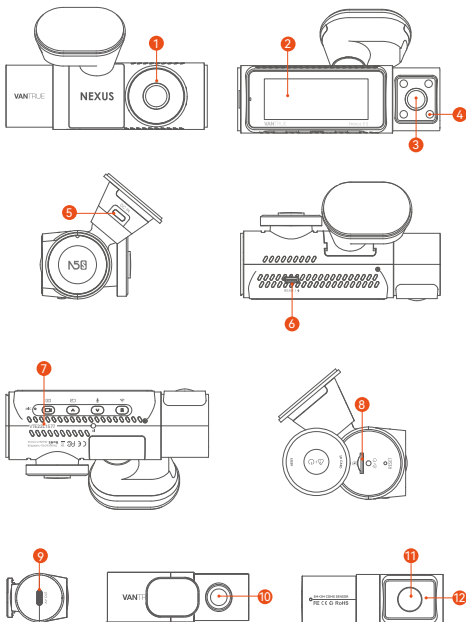
- ① N5S dash cam comes with a split adhesive mount, which can be detached by sliding the mount base.



## 2. Usage Instructions

This section contains the camera overview, button instructions, screen overview, and operation guide for the N5S dash cam.

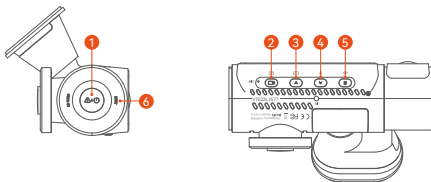
### 2.1 Camera Overview









- 1 Front Facing Camera
- 2 Screen
- 3 Front Cabin Camera
- 4 Infrared Lights for Front Cabin Camera
- 5 Type-C USB Port for Charging (This port can not be connected to rear camera or used for data transmission.)
- 6 Type-C USB Port for Rear Camera Connection (When connecting computer, it can be used for data transmission under U disk mode)
- 7 Serial Number
- 8 Micro SD Card Slot
- 9 Type-C USB Port for Rear Camera Cable
- 10 Rear Facing Camera
- 11 Rear Cabin Camera
- 12 Infrared Lights for Rear Cabin Camera

## 2.2 Button Instructions



No.	Button	Instruction
1		<ul style="list-style-type: none"> <li>• In power-on state, long press to turn off the dash cam. In power-off state, short press to turn on the dash cam.</li> <li>• In recording interface and WiFi interface, short press to start emergency recording and snapshot.</li> <li>• When browsing the files, short press to pop up the menu for deleting files.</li> </ul>
2		<ul style="list-style-type: none"> <li>• In recording interface, short press to start or pause recording, and enter standby mode, long press to turn off the screen.</li> <li>• In menu and setup interface, short press to confirm the option.</li> <li>• When playback video, short press to play or pause the video.</li> </ul>
3		<ul style="list-style-type: none"> <li>• In recording interface, short press to switch the video window.</li> <li>• In menu and file browsing interface, short press to select the previous option or file, long press to scroll through the above options or files.</li> <li>• When playback the video, short press to multiply the speed of the video.</li> </ul>
4		<ul style="list-style-type: none"> <li>• In recording interface, long press to quickly enter the parking mode, short press to turn on/off the microphone.</li> <li>• In menu and file browsing interface, short press to select the next option or file, long press to scroll down to display the options or files.</li> </ul>

5



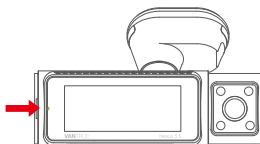
- In standby mode, short press to enter the menu.
- In power-on state, long press to turn on/off WiFi.
- In menu and file browsing interface, short press to return to the previous interface.


6



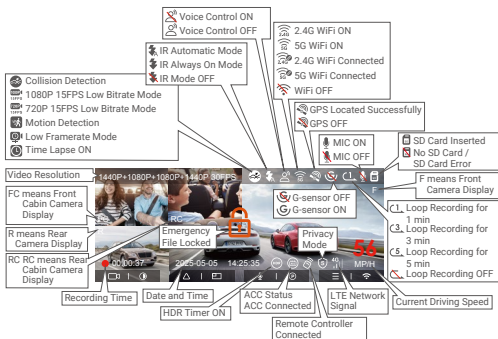
- Short press to restart the dash cam.

## 2.3 LED Indicator Instructions



LED Indicator	Instruction
	Steady Green Light: In standby status Blinking Green Light: In recording status

## 2.4 Screen Overview



## 2.5 Operation Guide

This section contains APP operation guide and dash cam operation guide.

### (1) APP Operation Guide

After downloading the Vantrue APP and connecting the N5S dash cam to your phone via WiFi, you can preview the video, configure settings, download files, playback videos, etc.

### (2) Download the APP

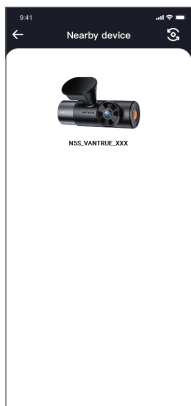
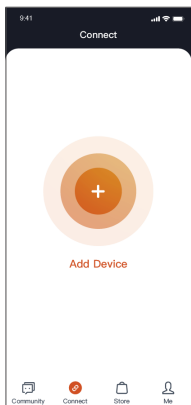
Please scan the QR code below by your phone to download and install the Vantrue APP as per the prompts.



### (3) Add Device

WiFi function will be automatically turned on when you turn on the N5S dash cam. When there is no connection, WiFi function will be turned off after 10 minutes by default. After WiFi function is turned off, you can turn it on again through shortcut key, voice control or menu.

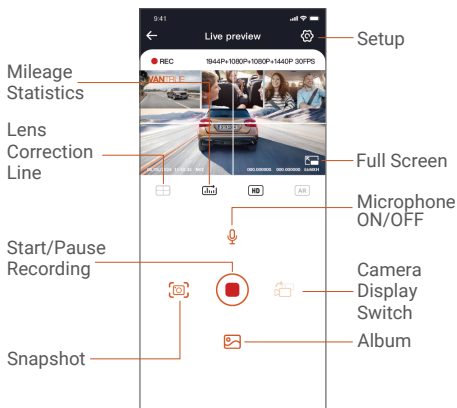
**Connection Method:** After WiFi function is turned on, click "Add Device" on Vantrue APP, select "Nexus" series, choose N5S model, confirm the corresponding WiFi name, and then operate as per the prompts.



## Note:

- ① Please check if the WiFi function of your phone is turned on before WiFi connectivity.
- ② The initial password of this dash cam is only for initial login. In order to eliminate security risks, please make sure to change the initial password in time after the initial login to prevent others from unauthorized access or other undesirable consequences. The WiFi password can be changed through the dash cam settings in the Vantrue APP.
- ③ The initial WiFi password is 12345678. If you forget your password, please navigate to "System Setup" and select "Default Settings" to return settings to default and restore the initial WiFi password.

## (4) APP Instructions



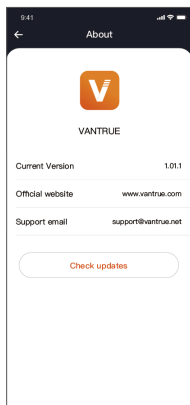
After entering the real-time preview interface of APP, you can do the following operations.

- ① **Preview Video:** After the APP is connected successfully, it will enter the real-time preview interface, click the full screen button or horizontal playback, the real-time screen automatically switches to full screen preview mode. Click the window switch button to switch the front, front cabin, rear cabin and rear video windows.
- ② **Playback Video:** You can view the recorded video or photo files in the SD card on APP, and select the video file to playback.
- ③ **Download Video:** In the SD card file browsing interface or video playback interface, you can choose to download videos or pictures. After downloading the video, you can playback it in the APP local file and view the GPS track of the video.
- ④ **Snapshot:** In the live preview interface, you can capture the current picture.
- ⑤ **Mileage Statistics:** The mileage information can be downloaded as needed. And it will be saved in the APP as a picture or PDF file.
- ⑥ **Lens Correction Line:** The lens balance is corrected by the accurate cross line, so that the recording image will not be skewed.

## **(5) APP Upgrade**

Open "Vantrue" APP, click "Me > About > Check Updates", then the APP will automatically detect if the current APP version is the latest version. If there is a new version of the APP, please operate as per the prompts and upgrade the version.



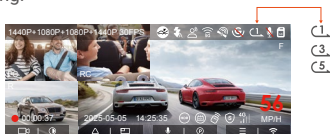


## (6) Dash Cam Operation Guide

This section contains the introductions for N5S dash cam's main features.

### A. Loop Recording

After the dash cam is turned on, it will automatically enter loop recording. The videos will be saved in the normal video folder based on the preset loop recording time. When the capacity of folder reaches 70% of the total capacity, the old files will be automatically overwritten by the newest to ensure continuous recording.



## Note:

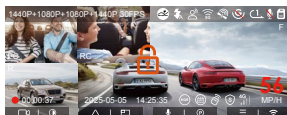
- ① The normal operation of loop recording function depends on the transmission speed of memory card, please format the memory card regularly to avoid the problems such as excessive files and aging card that will affect the stability of recording.
- ② Please check the loop recording videos regularly to prevent the important videos from being overwritten.
- ③ If loop recording is turned off, the emergency lock function would not work.
- ④ When loop recording is turned off, the duration of each video is 20 minutes. When the memory card is full, the dash cam will stop recording and prompt "Card Full".

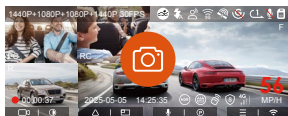
## B. Emergency Recording

When driving, the video can be locked manually by the user or automatically locked by the dash cam if any special circumstances occur.

- **Lock Manually:** Press the emergency recording button to lock the current video and snapshot. During the recording period, the user can press the button several times to snapshot.

- **Lock Automatically:** The dash cam will automatically trigger emergency lock when it detects any emergency.





### Note:

- ① The sensitivity of triggering automatic lock depends on the collision sensitivity. The higher the sensitivity, the more frequent the triggering.
- ② When the total capacity of event video files reaches 30% of the total capacity of current memory card, the old event video files will be automatically overwritten by the newest. Please check and back up files regularly against loss.
- ③ Emergency recording will not be triggered when loop recording is off or time lapse recording is on. You can only snapshot under these 2 situations.

## C. Parking Mode and Settings

When parking, you can set up a variety of parking monitoring settings according to the vehicle itself, the parking environment, your needs and other factors.



### Note:

- ① To ensure that the parking mode works properly, please use the Vantrue hardwire kit or other stable and continuous power supply to power the dash cam.
- ② We recommend using Vantrue ACC hardwire kit. The ACC hardwire kit from other brands may not work well due to the different location of the ACC detection PINs.

- ③ Under the hot and sunny environment in summer, we recommend using collision detection mode. When the ambient temperature in the car reaches 60°C, we suggest users to turn off the dash cam to avoid breakdowns.
- ④ Only one of time lapse recording and parking mode (including collision detection, motion detection, low bit rate mode, and low frame rate mode) can be turned on. Enabling one will automatically disable the other.
- ⑤ The video files recorded in parking mode will be saved in the parking video folder. To prevent the parking mode files from being overwritten by loop recording, please check them regularly against loss.
- ⑥ The parking mode and parking monitor settings function are related, different parking monitor settings are matched according to different parking modes.
- ⑦ Parking mode function will be improved with the dash cam function, please pay attention to the Vantrue official website firmware description of the public announcement, or consult with customer service.

#### **D. Parking Mode Introduction**

In order to meet different needs, we have enriched the working modes of parking and improved the working logic therein.

The ways of entering the parking mode are different because of the different power supply modes. At present, it supports two entry modes:

- ① After the ACC hardwire kit is disconnected, the dash cam enters the parking mode immediately.
- ② When the vehicle is stationary for 5 minutes, the dash cam will enter the parking mode automatically.

- ③ Users can choose the appropriate entry mode according to their own vehicle power supply situation to ensure the normal operation of the parking monitoring function.

### Parking Mode 1: Collision Detection

When Collision Detection is on, the Collision Detection icon will be displayed in the recording interface, indicating that the camera is in Collision Detection mode. The sensitivity of Collision Detection value can be selected as 1/2/3/4/5. The higher the sensitivity level, the easier it is to trigger emergency recording. The sensitivity is highest at 5.



When the G-sensor detects that the vehicle has been stationary for 5 minutes (entering collision detection mode), the dash cam will display the appropriate icon in the center of the screen and automatically shut down. After shutting down, if the vehicle vibrates or moves, the dash cam will automatically turn on and record a 1-minute video, and then turn off again to ensure that key videos are recorded.

According to different user habits, the collision detection mode provides two startup modes: quick start and power saving mode. Users can go to **Record Setup > Parking Monitor Settings > Collision Detection in Parking Mode** to choose.

**Quick Start Mode:** The dash cam enters the standby mode with the screen off. When a collision occurs, the device will immediately light up the screen to record video, save the file and continue to enter the standby mode after the recording is completed.

**Power Saving Mode:** When the dash cam is completely turned off, it automatically turns on to record after detecting a collision, saves the file and turns off itself after recording is completed, which is more energy-saving.

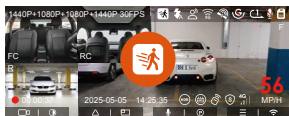
**Note:**

If the dash cam continues to be hit by a collision during the collision detection recording process, it will exit the collision detection mode, enter normal recording, and continue to stand still for 5 minutes before entering collision detection again.

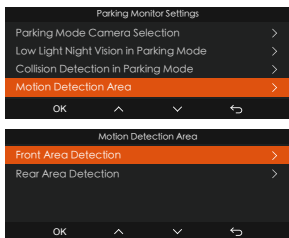
**Parking Mode 2: Motion Detection**

When Motion Detection is on, the Motion Detection icon will be displayed in the recording interface, indicating that the dash cam is in Motion Detection mode. There are three levels of sensitivity options (low/medium/high) available, corresponding to a detection range of 2 /4 /6 meters.

**The process of triggering:** N5S dash cam supports pre-recording function, which can better restore the whole event. It adds 10 seconds of recording footage before the triggering event to the motion detection video, resulting in a 40-second motion detection video (10 seconds of pre-recording + 30 seconds after the triggering recording).



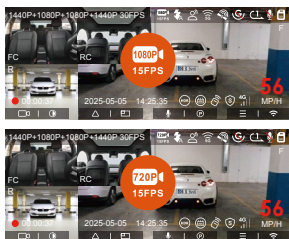
You can select the detection lens and adjust the area of motion detection in the parking monitoring settings to more accurately monitor activities within a specific range. This function works in conjunction with the Motion Detection Parking Mode to ensure that the device automatically triggers recording when it detects abnormal movement, increasing surveillance efficiency and reducing ineffective recordings.



**Note:** This mode only works when the dash cam is powered on. If the dash cam is turned off, it will not function.

### Parking Mode 3: Low Bitrate Recording

When low bitrate recording is turned on, the screen displays the low bitrate icon and the dash cam records according to the set resolution (1080P 15FPS or 720P 15FPS).

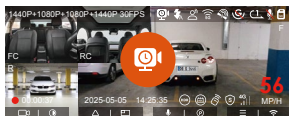


**Entry Mode:** After the vehicle is off, the dash cam automatically enters the low bitrate mode, the resolution of all the cameras are adjusted to the set value. The dash cam records according to the loop recording time.

**Note:** This mode only works when the dash cam is powered on. If the dash cam is turned off, it will not function.

#### Parking Mode 4: Low Framerate Recording

When low frame rate recording is turned on, the dash cam will record according to the 1FPS/5FPS/10FPS/15FPS settings selected by the user.



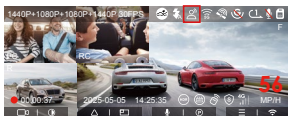
**Entry Mode:** After the vehicle is off, it will automatically enter the low frame rate mode, which can effectively retain the video completely and save storage space.



**Note:** The dash cam needs stable power supply, if the power supply is disconnected, the dash cam will automatically shut down.

## E. Voice Control

You can control the camera with voice commands, such as take photo, video start, turn on/off Wi-Fi, lock the video, etc. Currently supported languages are English, Japanese, Russian, Chinese and French. For more detailed voice commands, please go to **System Setup > Voice Content** to view them.

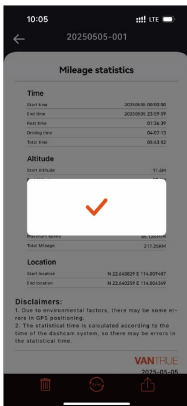
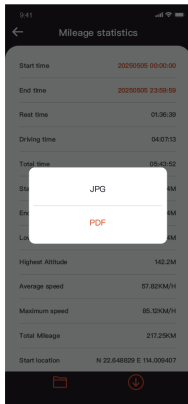
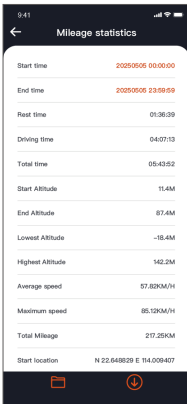


Voice control has options of low sensitivity/standard/high sensitivity/off. The default setting is standard sensitivity.

## F. Mileage Statistics

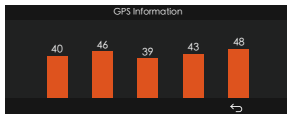
N5S dash cam analyzes mileage information such as driving time, driving mileage, altitude, driving speed and so on based on the recorded GPS data. The mileage files can be exported via APP.

In the APP real-time preview interface, you can select the start time and end time and download the mileage statistics file as a PDF or JPG file and save it in the APP local folder.



## G. GPS Function

GPS is enabled by default. The N5S dash cam receives GPS signals via a GPS mount. It automatically corrects the time and date based on the location, records driving location, speed to ensure the accurate video data, providing key evidences for you in case of accident.

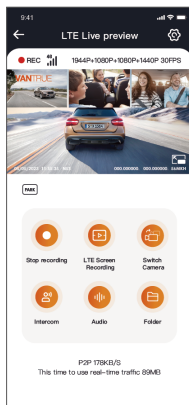


### Note:

- ① The GPS connection will be completed within 1 minute after you turn on the dash cam. If the GPS connection is unsuccessful within 1 minute, please check:
  - whether the GPS function is enabled.
  - whether the dash cam is correctly connected to the GPS mount.
  - whether the signal is affected by the environment (e.g. underground parking lots, tunnels, denseness building areas, etc.).
- ② The GPS information is saved with the recorded video, please check it via Vantrue APP or Vantrue Player.

## H. LTE Setup (Must be connected with LTE module. Buy Separately)

For users to remotely view their vehicle's parking situation, Vantrue introduces the LTE module. Users can insert the SIM card into the LTE module and connect the dash cam to realize remote monitoring.



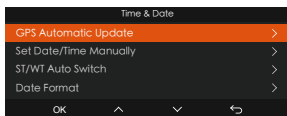
In LTE setup, users can customize the following settings:

- a. Message push settings
- b. SIM card traffic consumption limit
- c. The upload picture quality of collision video

Users can flexibly adjust the settings according to the SIM card package to ensure the efficient use of traffic and remote monitoring functions.

## I. GPS Automatic Time Correction

The default setting of GPS automatic time correction for N5S dash cam is on. If your location is Los Angeles, you can select GMT-08:00. If you don't know the time zone of your location, you can connect your phone to the dash cam via WiFi, and turn on the automatic time correction function in Vantrue APP, so the dash cam will correct the time zone of the dash cam according to the time zone of your phone.



### Note:

- ① GPS automatic time correction needs to set the correct time zone, you can refer to the representative cities of each time zone.
- ② Automatic switching between Winter Time and Summer Time is available for North America only.

## J. Playback Files

For users to watch high definition videos, Vantrue provides an exclusive computer player:

- **Mac users** can search for "Vantrue Player" in the Apple App Store and download it.
- **Windows users** can go to Vantrue official website. (<https://www.vantrue.net/app/app.html>) to download the latest version of the player.

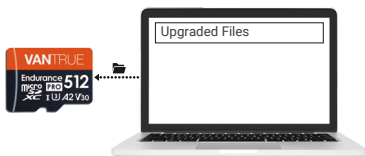
The player supports video playback, GPS track view, speed display and other functions to provide users with a better video experience.



## K. Update Firmware

### Upgrade Method 1: Update via Files

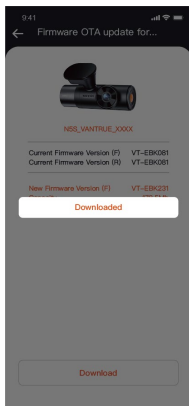
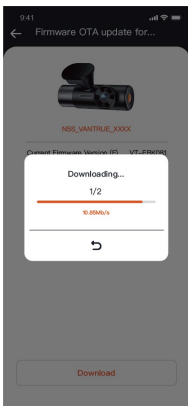
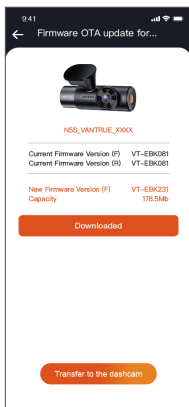
Download the latest firmware file for N5S dash cam on Vantrue official website, copy the firmware file to the root directory of the memory card, then insert the memory card back into the dash cam, the system will automatically update the firmware after the dash cam is turned on.

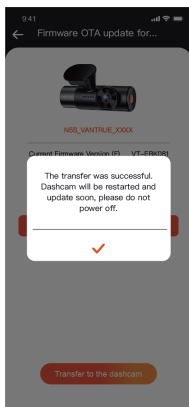
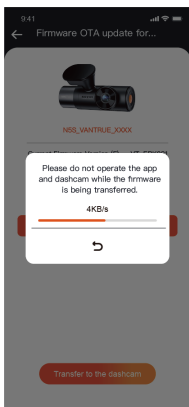


### Upgrade Method 2: OTA (Over the Air)

#### Firmware Update

After opening the APP, if you receive an update reminder of the dash cam firmware, please confirm the upgrade, and then it will jump to the OTA upgrade interface, you can upgrade the firmware according to the APP guidelines.





**Note:**

- ① To upgrade firmware via file or OTA upgrade, please keep N5S dash cam powered on.
- ② Downloading firmware file via OTA upgrade will consume data traffic
- ③ To upgrade the firmware via file, please format the memory card on the N5S dash cam first, then put the firmware file into the memory card to upgrade the firmware.



## 2.6 Menu Introduction

The N5S dash cam function has three sections including Record Setup, System Setup, and File Browsing. You can set your dash cam according to your requirements with these function setting.

### (1) Record Setup:

a. **Resolution:** The N5S dash cam has 4 recording modes:

Recording Mode	Resolution	Default Settings
Front+Front Cabin+Rear Cabin+Rear	1944P+1080P+1080P+1440P 30FPS	
	1440P+1080P+1080P+1440P 30FPS	√
	1440P+720P+720P+1440P 30FPS	
	1440P+1080P+1080P+1080P 30FPS	
	1080P+1080P+1080P+1080P 30FPS	
	1080P+720P+720P+1080P 30FPS	
Front+Front Cabin+Rear	1944P+1080P+1440P 30FPS	
	1440P+1080P+1440P 30FPS	√
	1440P+720P+1440P 30FPS	
	1440P+1080P+1080P 30FPS	
	1080P+1080P+1080P 30FPS	
	1080P+720P+1080P 30FPS	

Front+Rear Cabin+Rear	1944P+1080P+1440P 30FPS	
	1440P+1080P+1440P 30FPS	√
	1440P+720P+1440P 30FPS	
	1440P+1080P+1080P 30FPS	
	1080P+1080P+1080P 30FPS	
	1080P+720P+1080P 30FPS	
Front+Front Cabin	1944P+1080P 30FPS	
	1440P+1080P 30FPS	√
	1440P+720P 30FPS	
	1080P+1080P 30FPS	
	1080P+720P 30FPS	
	720P+720P 30FPS	
Front+Rear	1944P+1440P 30FPS	
	1440P+1440P 30FPS	√
	1440P+1080P 30FPS	
	1440P+720P 30FPS	
	1080P+1080P 30FPS	
	1080P+720P 30FPS	
Front	2592x1944P 30FPS	
	2560x1440P 30FPS	√
	1920x1080P 30FPS	
	1280x720P 30FPS	

Note: When the rear camera is disconnected, the related functions will be hidden.

- b. Loop Recording:** Default setting is 1 min. You can choose the options among 1/3/5 min and OFF. When disabled, the duration of each video is 20 minutes by default, the dash cam will record until the card is full.
- c. IR LEDs:** The front cabin and rear cabin cameras have infrared lights. There are 3 options available: Auto/OFF/ON, The default setting is Auto.
- d. G-Sensor:** Select the sensitivity of G-sensor you need. You can set 3 directions (Front + Rear/Left + Right/Up + Down). The sensitivity level of G-sensor in each direction can be selected as 1/2/3/4/5/OFF. The higher the sensitivity level, the easier it is to trigger emergency recording. G-sensor is most sensitive when set to 5.
- e. Privacy Mode:** The default setting is OFF. When enabled, the video is recorded in a three-stage loop mode.
- f. Audio Recording:** The default setting is ON. You can set it to ON or OFF.
- g. Audio Noise Reduction:** The default setting is ON. It adjusts the audio effect of recording by dynamic noise reduction. You can choose to turn it on or off.
- h. Exposure:** You can set the camera exposure value of the front, front cabin, rear cabin and rear camera separately. The default setting is +0.0.
- i. REC Status Light:** The default setting is ON. You can choose to turn on/off the recording status light.
- j. WDR:** The default setting is ON. It will balance the image details in bright and dark areas and improve the recording effect. You can choose to turn it on or off.

- k. **Rear HDR:** The default setting is ON. It will balance the image details in bright and dark areas and improve the recording effect. You can choose to turn it on or off.
- l. **Rotate Display:** The default setting is OFF. You can turn on the rotate display for front + front cabin cameras and rear cabin + rear cameras separately.
- m. **Mirror:** The default setting is ON. When enabled, the images of the front cabin and rear cabin cameras are displayed in mirror mode.
- n. **Number Plate:** Select the number or letter to set the number plate. After setting, your license plate number can be displayed in the recorded video.
- o. **Stamp:** Enable or disable the watermark stamp on videos. The watermark stamp includes time and date label, VANTRUE label, license plate number, GPS location information, and speed label. All enabled by default.
- p. **Time Lapse:** The default setting is OFF. You can choose to enable 1FPS/5FPS/10FPS/15FPS.
- q. **Parking Mode:** You can choose the parking mode you need. There are Collision Detection / Motion Detection / Low Bit Rate Recording / Low Frame Rate Recording / OFF. The default setting is OFF.
- r. **Parking Monitoring Settings:** This function includes parking mode camera selection, low light night vision in parking mode, motion detection area, collision detection in parking mode.
- s. **LTE Settings:** This function needs to be used after the dash cam is connected to LTE module. The default settings are turning on real-time push message, daily 300MB data traffic limit, collision video traffic-saving upload. Users can change the settings as needed.
- t. **Mileage statistics:** The default setting is ON. When enabled, the dash cam will record the mileage information, and you can export the mileage

statistics through the mileage statistics function in Vantrue APP.

- u. **GPS Settings:** GPS is enabled by default. GPS ON/OFF settings, speed unit settings, and GPS information can be checked here.

## (2) System Setup

- a. **Language:** Available languages are English/- Français/Español/Deutsch/ Italiano/简体中文/русский/日本語/PolSKI/한국어.
- b. **Wi-Fi:** There are Wi-Fi auto on, Wi-Fi mode, and Wi-Fi information options under this function.  
Wi-Fi Auto On: The default setting is ON. WiFi will automatically turn off after 10 minutes. When disabled, WiFi need to be turned on manually.  
Wi-Fi Mode: The default setting is 5G. When enabled, you can connect your phone to the dash cam via WiFi and control the N5S dash cam on Vantrue APP.  
Wi-Fi Information: You can check Wi-Fi name and Wi-Fi password here.
- c. **Voice Control:** The default sensitivity is Standard. When enabled, the dash cam can recognize voice commands. You can choose options such as low sensitivity/high sensitivity/standard/off.
- d. **Voice Content:** The function includes the specific voice commands that can be recognized by this dash cam. You can remotely control the dash cam by different commands.
- e. **Format SD Card:** Format all data on the memory card.
- f. **Format Reminder Setup:** The default setting is OFF. You can choose to remind 15 days or 1 month later. When it reaches the preset time, you can choose "OK" to format, or choose "Next" to recalculate the time.
- g. **Time & Date:** There are two ways to set the time

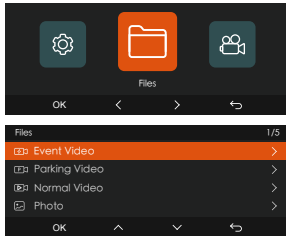
and date:

- ① **GPS Automatic Update:** The default setting is ON. The dash cam updates the time automatically based on the time zone, so you need to choose the correct time zone first.
- ② **Set Date/Time Manually:** Turn off GPS automatic update and set date and time manually.  
**Summer/Winter Time Auto Switch:** The default setting is OFF. When enabled, it will automatically switch between summer time and winter time.  
\*This feature is only available in North America, if it is used in other regions, it may cause time errors. The date format and time zone settings can also be set in this menu.
- h. Auto LCD Off:** The default setting is OFF. You can choose the options among 30s, 1Min, 3Min and OFF.
- i. LCD Brightness:** The default setting is Auto. You can choose the options among High, Medium and Low. In auto mode, the brightness will drop to 50% after 10 minutes of no operation.
- j. Device Sound:** The default volume level is 2, the lowest is 0, and the highest is 5.
- k. Warning Tone:** According to different situations, the dash cam is set with 5 kinds of prompt tones including power-on/off sound, keys sound, file locked sound, format reminder sound, and abnormal stop recording reminder sound. All warning tones are turned on by default.
- l. Frequency:** Different countries have different frequencies. To avoid affecting the recording, you can choose 50Hz or 60Hz frequency according to different regions.
- m. System Info:** Check the current model, firmware version, and Vantrue official website URL.
- n. Certification Info:** You can view the certification information of N5S dash cam here.

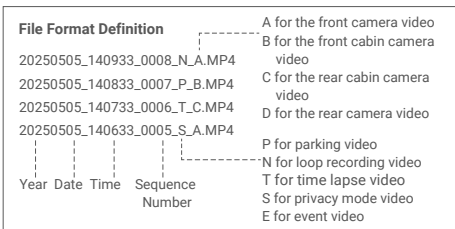
- o. Default Settings:** Reset the device back to factory settings.

### (3) Files

The recorded video and photo files can be checked here.



- a. Event Video:** Critical event videos detected by G-Sensor or manually locked by user, and all vibration locking video in parking mode.
- b. Parking Video:** It contains the parking mode videos recorded in motion detection, low framerate recording, and low bitrate recording modes.
- c. Normal Video:** This folder saves loop recording video and time lapse video, and private video files.
- d. Photo:** Photos files.
- e. All Files:** All the recorded videos and photos can be checked here.



### 3. Specifications & FAQs

#### 3.1 Technical Specifications

To provide a better user experience for users, we will upgrade our products. The product specifications may change without notice.

Model	N5S
Chips	Novatek High Performance Processor
Image Sensor	Sony Sensor
G-sensor	Built-in 3-Axis G-sensor
WiFi	Built-in 2.4GHz & 5GHz WIFI
Screen	3.19" IPS Screen
Camera Angle	Front: 158° wide viewing angle Front Cabin: 160° wide viewing angle Rear: 165° wide viewing angle Rear Cabin: 160° wide viewing angle
Aperture	Front: F1.8 Front Cabin: F1.8 Rear: F1.8 Rear Cabin: F1.8



Languages	English、简体中文、日本語、Deutsch、Italiano、Español、Français、Русский язык、Polski、한국어
Highest Resolution	Front+Front Cabin+Rear Cabin+Rear 1944P+1080P+1080P+1440P 30FPS Front+Front Cabin+Rear 1944P+1080P+1440P 30FPS Front+Rear Cabin+Rear 1944P+1080P+1440P 30FPS Front+Front Cabin 1944P+1080P 30FPS Front+Rear 1944P+1440P 30FPS Front 2592x1944P 30FPS
Video Format	MP4
Image Format	JPEG
Audio	Built-in microphone and speaker
Memory Storage	External: 32GB-1TB Micro SD Card with U3 or higher data transmission speed. (not included in the package)
USB Port	Type C
Power Source	Built-in super capacitor
Supply Voltage Current	DC 5V 3A
Power	10W
Working Temperature	-4°F to 140°F(-20°C to 60°C)
Storage Temperature	-13°F to 158°F(-25°C to 70°C)

## 3.2 Usage Notes

- ① This product is an auxiliary device for the purpose of recording exterior images of vehicles, and some functions may not be supported due to different driving and vehicle environments.
- ② Firmware upgrade will be carried out from time to time to further improve the product, please pay attention to the official notice of VANTRUE according to the specific upgrade.
- ③ This product can record and save images of vehicle accidents, but it does not guarantee that all accident images can be recorded. The image may not be recorded in a special folder because the crash sensor cannot be activated for minor crashes.
- ④ Be sure to turn off the power when inserting or removing the memory card.
- ⑤ For stable use of the product, please format the memory card at least once a month.
- ⑥ Generally, memory cards have a life span. Long-term use of memory cards may result in data not being saved. In this case, it is recommended to
- ⑦ purchase a new memory card for use. If the data is destroyed due to the long-term use of the memory card, the company will not be held responsible. Do not install or operate this product when driving.
- ⑧ Do not subject the product to strong shocks or vibrations, which may damage the product and cause malfunction or inoperability.
- ⑨ Do not use chemical solvents or cleaning agents to clean the product.
- ⑩ The ambient temperature range for normal use of this device is -20 degrees Celsius to 60 degrees Celsius. Exceeding this ambient temperature range may cause malfunction of dash cam.

- ⑪ Do not place the product in an open flame. Do not use the product in high temperature and high humidity areas, as these may cause electric shock, short circuit, and other hazards and damage the product.
- ⑫ It is forbidden to disassemble or modify the car charger by yourself, or use a short-circuit car charger, otherwise it will cause personal injury, electric shock, fire and other dangers or damage the product.
- ⑬ Do not disassemble or modify this product to avoid damaging the dash cam and generating heat and causing fire.

### **3.3 FAQs**

- ① The dash cam can't be turned on: Please check if the power connection is good as well as check if the power cord or car charger is damaged.
- ② Memory card error: Make sure that you use a compatible SD card with FAT32 format, and format the memory card regularly.
- ③ Video recording interruption or jamming: Please check the rate of the memory card, we recommend using a memory card with U3/A2 grade .
- ④ Poor night vision: Please clean the lens as well as the car windshield and turn on WDR and HDR mode.
- ⑤ GPS can not be located: Make sure to use the dash cam in outdoor open area to avoid signal shielding interference.
- ⑥ Wi-Fi connection failure: Please restart the dash cam and make sure the Wi-Fi function of the dash cam is in the pending connection state. And try to switch the Wi-Fi band (5GHz/2.4GHz) of the dash cam and reconnect.
- ⑦ Button malfunction: Please check the firmware version of the device and reset the dash cam.

If the problem persists after troubleshooting, please contact Vantrue official customer service for further assistance.

## **4. Warranty & Support**

### **Warranty**

Vantrue N5S dash cam comes with a 12-month warranty. You can register the product on Vantrue official website ([www.vantrue.net/register](http://www.vantrue.net/register)) to extend the warranty to 18 months.

### **Support**

If you have any questions about the product, please solve them in the following ways, we will reply within 24 hours:

- ① Find answers to your questions at "About > FAQs" in the Vantrue APP.
- ② Contact purchase channel customer service for support.
- ③ Send email to [support@vantrue.net](mailto:support@vantrue.net).

VANTRUE® is firmly committed to improving our products, services and user experience. If you have any thoughts on how we can do even better, please feel free to contact us via [support@vantrue.net](mailto:support@vantrue.net).

**Thank you for choosing VANTRUE!**

**VANTRUE**  
truly driven.



[www.vantrue.com](http://www.vantrue.com)

Made in China